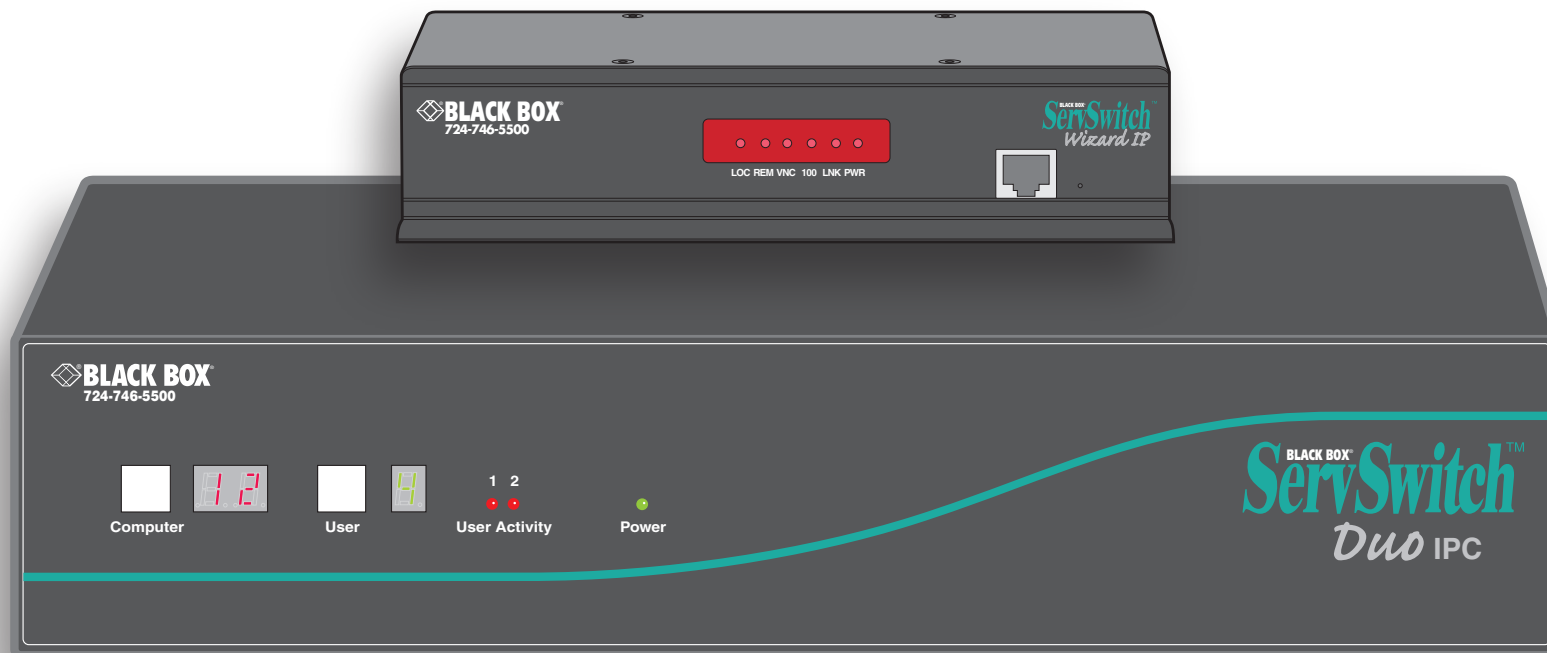




# ServSwitch™ Duo IP

## USER GUIDE



**CUSTOMER  
SUPPORT  
INFORMATION**

Order **toll-free** in the U.S.: Call **877-877-BBOX** (outside U.S. call **724-746-5500**)  
FREE technical support 24 hours a day, 7 days a week: Call **724-746-5500** or fax **724-746-0746**  
Mailing address: **Black Box Corporation**, 1000 Park Drive, Lawrence, PA 15055-1018  
Web site: [www.blackbox.com](http://www.blackbox.com) • E-mail: [info@blackbox.com](mailto:info@blackbox.com)

**WELCOME**

# Welcome

## Introduction

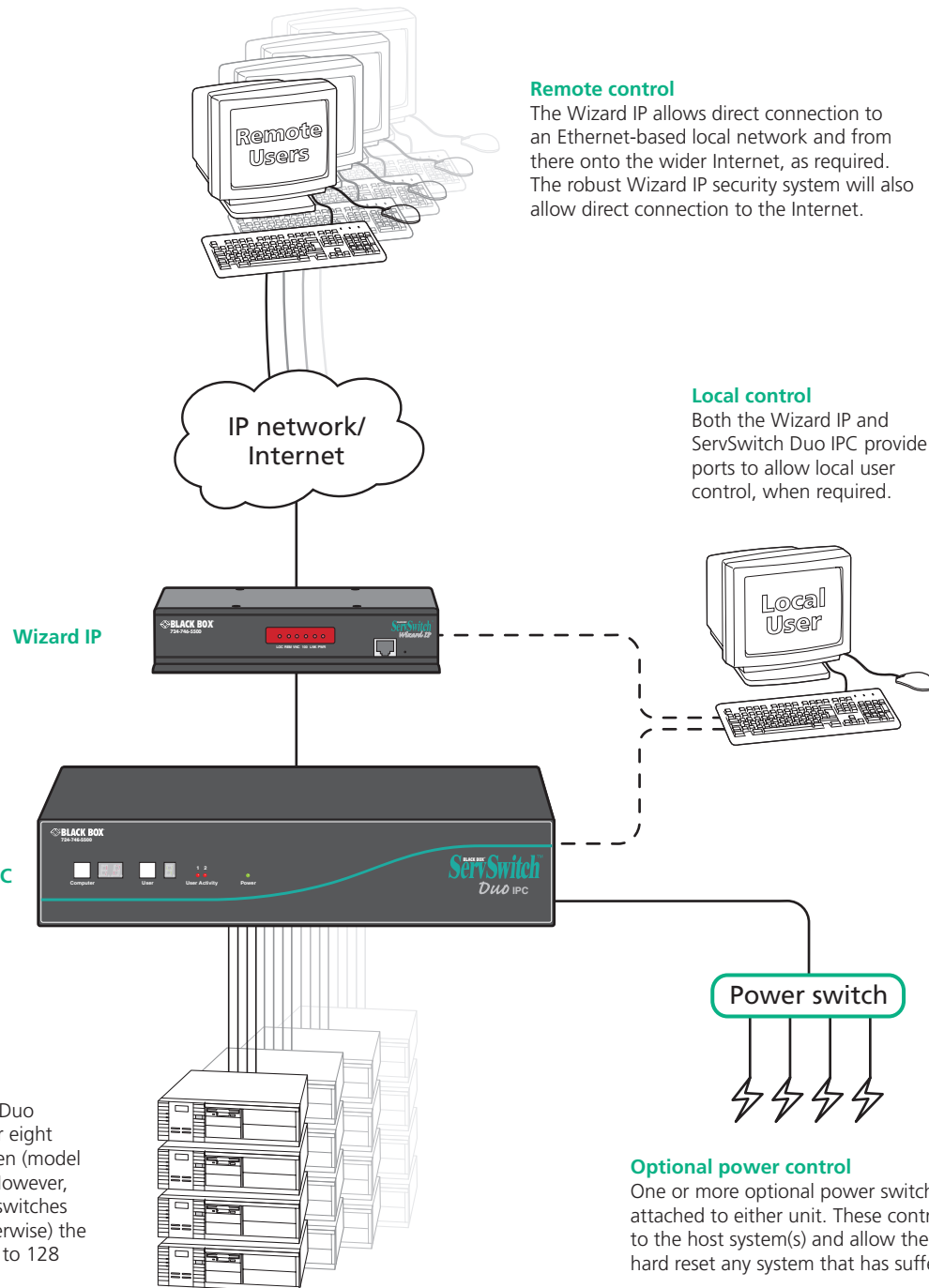
This guide is intended as a brief overview to using the Wizard IP and the ServSwitch Duo IPC products together. Both of these products are supplied with their own dedicated guides and this overview provides clickable links to those guides (when their files are stored in the same folder of your system). The Wizard IP and ServSwitch Duo IPC are both powerful and popular products in their own rights. However, when they are combined, the resulting system is even greater than the sum of its parts. Together these products equip you with full control of multiple host computers from literally anywhere, all via a basic internet connection.

This overview guide contains three main sections:

- [Installation](#)
- [Configuration](#)
- [Operation](#)

### Control of many hosts

On its own, the ServSwitch Duo IPC provides access to either eight (model ACR6208A) or sixteen (model ACR6216A) host systems. However, when linked to other KVM switches (ServSwitch Duo IPC or otherwise) the user(s) can easily control up to 128 separate host systems.

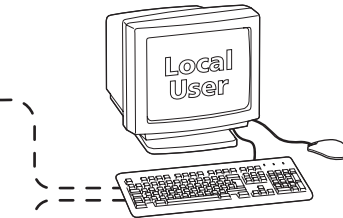


### Remote control

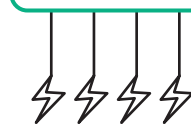
The Wizard IP allows direct connection to an Ethernet-based local network and from there onto the wider Internet, as required. The robust Wizard IP security system will also allow direct connection to the Internet.

### Local control

Both the Wizard IP and ServSwitch Duo IPC provide ports to allow local user control, when required.



### Power switch



### Optional power control

One or more optional power switches can be attached to either unit. These control the supply to the host system(s) and allow the remote user to hard reset any system that has suffered a failure.



WELCOME

INSTALLATION

CONFIGURATION

OPERATION

CONTACTS

# Installation



## Connections to optional power switches

The power switches can be connected to either unit, although if two Wizard IP devices are used, it is advantageous to connect them to the ServSwitch Duo IPC.

See [Power switching connections for ServSwitch Duo IPC](#) or [Power control port for Wizard IP](#).

## Power supply connections

See [Power supply connections for ServSwitch Duo IPC](#) or [Wizard IP](#).

## Items supplied and required

See [What's in the box for ServSwitch Duo IPC](#) or [Wizard IP](#).

## Wizard IP and ServSwitch Duo IPC main link

See [Wizard IP connections](#).

## Cascade connections

See [Cascade connections for ServSwitch Duo IPC](#).

## Local user connections

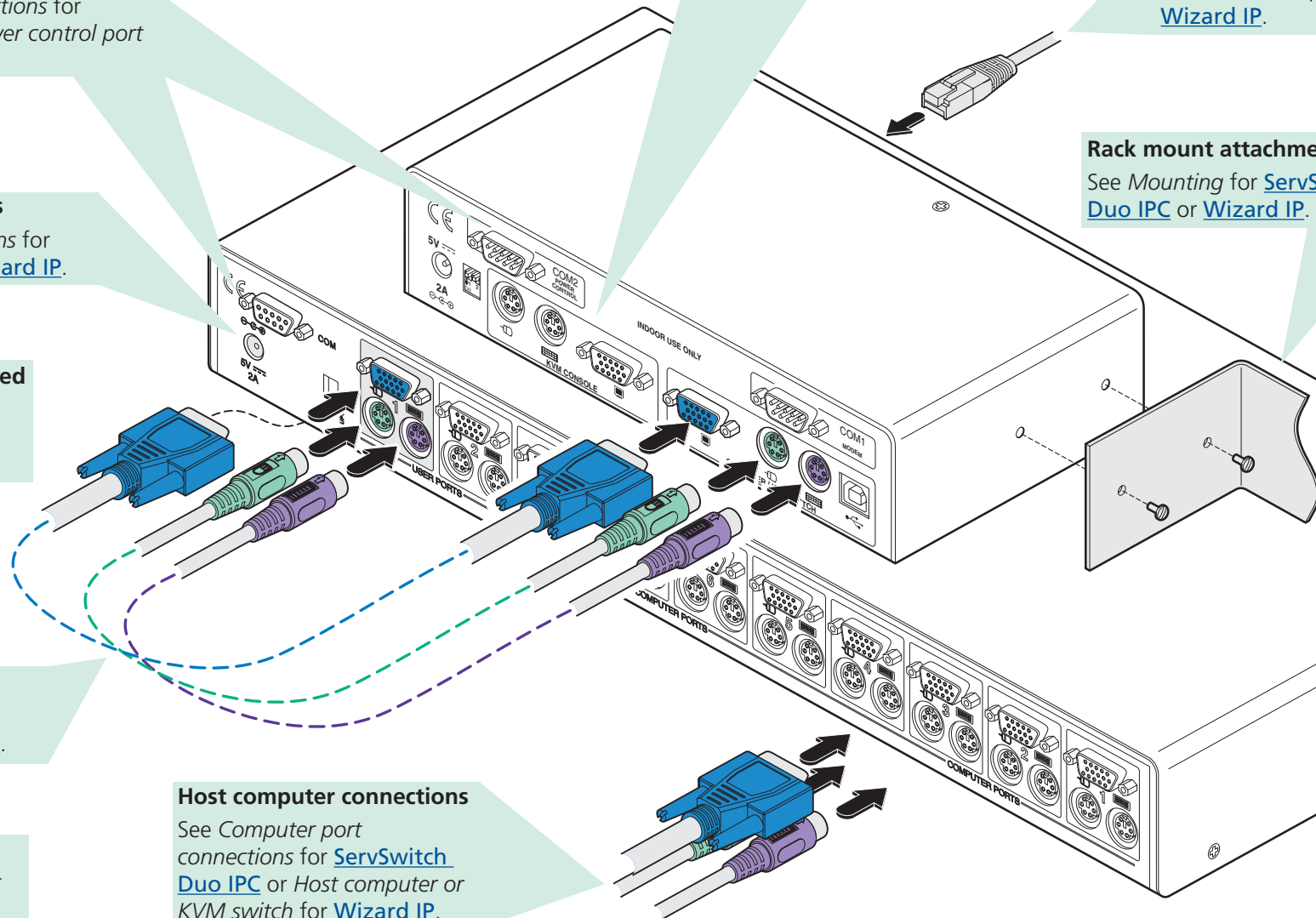
See [Local keyboard, video monitor and mouse for Wizard IP](#) or [User port connections for ServSwitch Duo IPC](#). Note: You are recommended to connect your local monitor, keyboard and mouse to the Wizard IP.

## Network connection

See [IP network port for Wizard IP](#).

## Rack mount attachments

See [Mounting for ServSwitch Duo IPC](#) or [Wizard IP](#).



WELCOME

INSTALLATION

CONFIGURATION

OPERATION

CONTACTS

# Configuration



You can configure the Wizard IP and ServSwitch Duo IPC devices in any order, however, when your local monitor, keyboard and mouse are connected to the Wizard IP, it is that device that you will see first. In such cases, start with the Wizard IP.

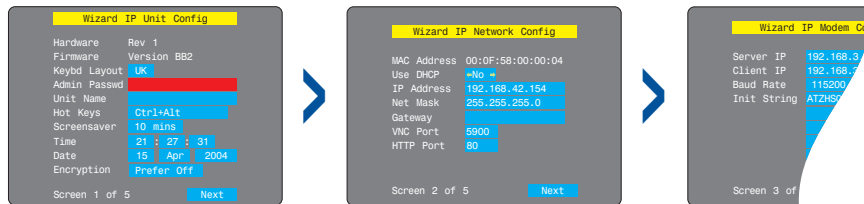
## Wizard IP

Wizard IP has a two-part initial configuration:

### Part 1 – Local configuration

This must be carried out using the locally connected keyboard and monitor. It prompts you to set up key basic details, network essentials, modem/ISDN parameters and security key creation.

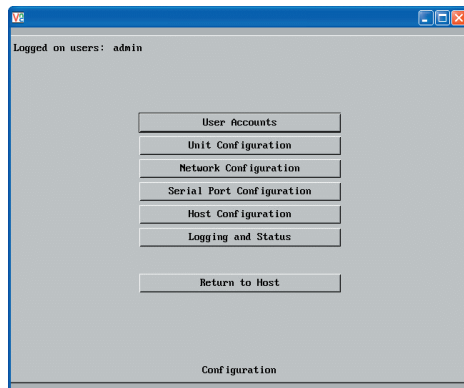
See [Part 1 - Local configuration](#)



### Part 2 – Remote configuration

This must be made using a remote connection (network or dial-up modem/ISDN). It allows fine tuning of the *Part 1-local configuration* items, plus the creation of multiple user accounts and declaration of all host computers.

See [Part 2 - Remote configuration](#)



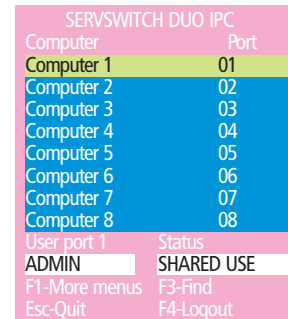
The important aspects to configure are:

- [Security considerations](#)
- [Register all host computers](#)
- [Register all users](#) and define which hosts computers to which they will have access.

## ServSwitch Duo IPC

The ServSwitch Duo IPC configuration can be carried out from the local keyboard and monitor, connected to either the Wizard IP or to the ServSwitch Duo IPC. The advantage of the former is that you can gain access to either device from the same position. Once the Wizard IP is initially configured, you can even configure the ServSwitch Duo IPC via a remote link.

See [Overall initial configuration](#)



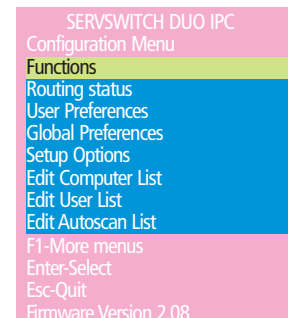
The important aspects to configure are:

- [Enable security](#)
- [Set admin user password](#)

### Important

Individually the Wizard IP and ServSwitch Duo IPC can both maintain their own separate records of computers and users. However, when used together, the ServSwitch Duo IPC operates strictly as a slave to the Wizard IP. This means that almost all configuration of users and computers need only take place on the Wizard IP. The exception to this is the creation of a unique password for the ServSwitch Duo IPC admin user.

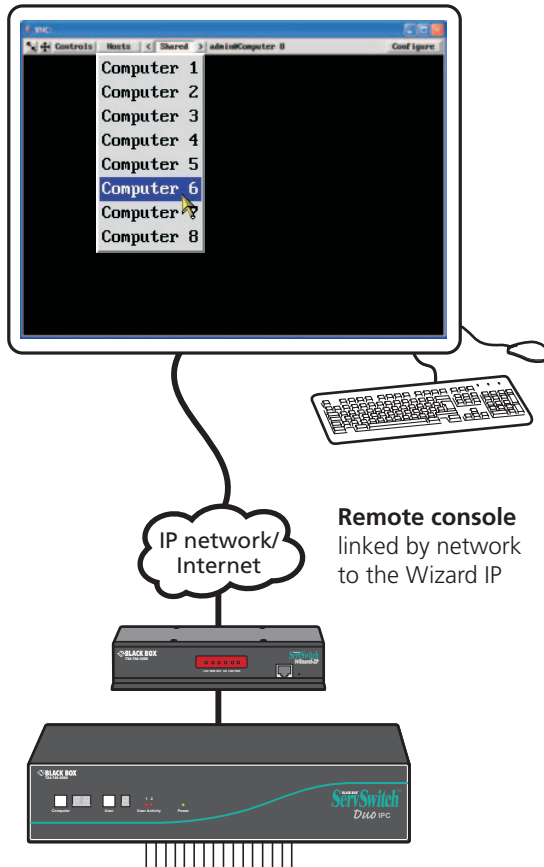
You do not need to configure any users or computers on the ServSwitch Duo IPC unless, a local user, connected directly to the ServSwitch Duo IPC, will need to access computers.



# Operation

## Switching between computers

There are three ways to switch on-screen between computers, depending on how your console is connected:

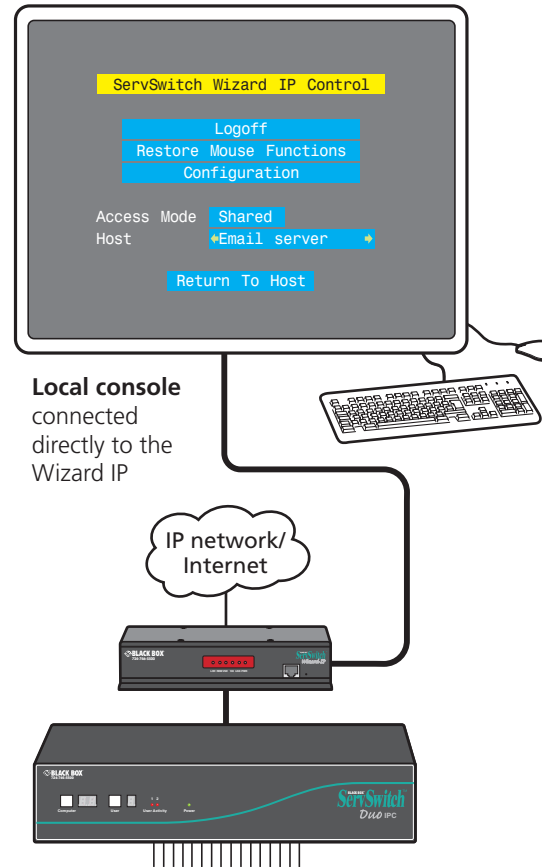


Remote console  
linked by network  
to the Wizard IP

### Switching using the Wizard IP Hosts list

The *Hosts* list lets you select all registered computers for which you have access rights.

See [Remote connections](#) and [Host selection](#)

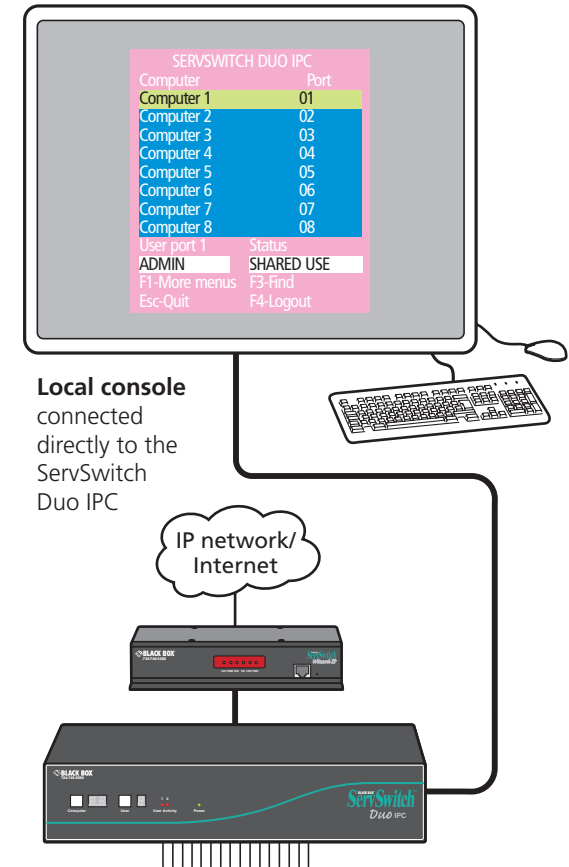


Local console  
connected  
directly to the  
Wizard IP

### Switching using the Wizard IP control menu

Press **Ctrl**, **Alt** and **C** to access. The *Host* section lets you select all registered computers for which you have access rights.

See [Local connection](#)



Local console  
connected  
directly to the  
ServSwitch  
Duo IPC

### Switching using the ServSwitch Duo IPC menu

Press **Ctrl**, **Alt** and **M** to access. The on screen display menu lets you select computers for which you have access rights. The front panel can also be used.

See [Selecting a computer](#)



WELCOME

INSTALLATION

CONFIGURATION

OPERATION

CONTACTS